

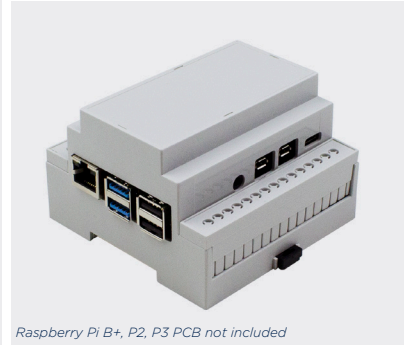
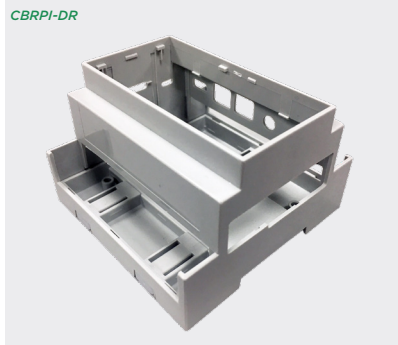
DIN Rail Pi 4B enclosures

Product overview

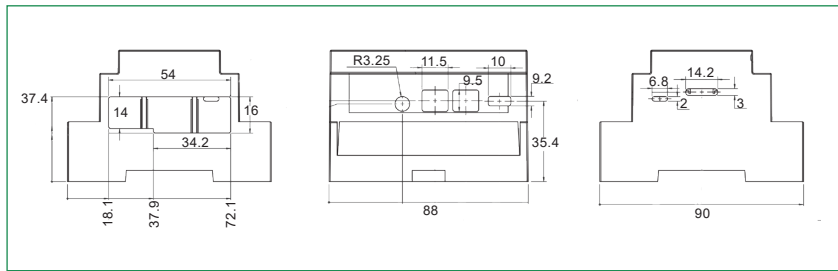
No screws, no glue – just add your **Raspberry Pi** filling!

- Designed to house the Raspberry Pi 4B via clip-in design - **NO SCREWS REQUIRED!**
- All cut-outs are pre-cut into the case - **NO MODS REQUIRED!**
- Pi 4 board is mounted upside down so that a Pi HAT can be fitted
- Terminal guards can be left off to increase air flow
- Slot for display ribbon cable
- DIN Rail mountable or wall mountable
- Moulded in PC (polycarbonate)

CBRPI-DR



Raspberry Pi B+, P2, P3 PCB not included



PART NO.	MATERIALS	DIMENSIONS
CBRPI-DR-4-GRY	Thickness 3mm	L 88mm x W 90mm x H 58mm
CBRPI-DR-4-CLR	Thickness 3mm	L 88mm x W 90mm x H 58mm

KEY FEATURES

High quality polycarbonate | DIN Rail mountable | No mods required

